

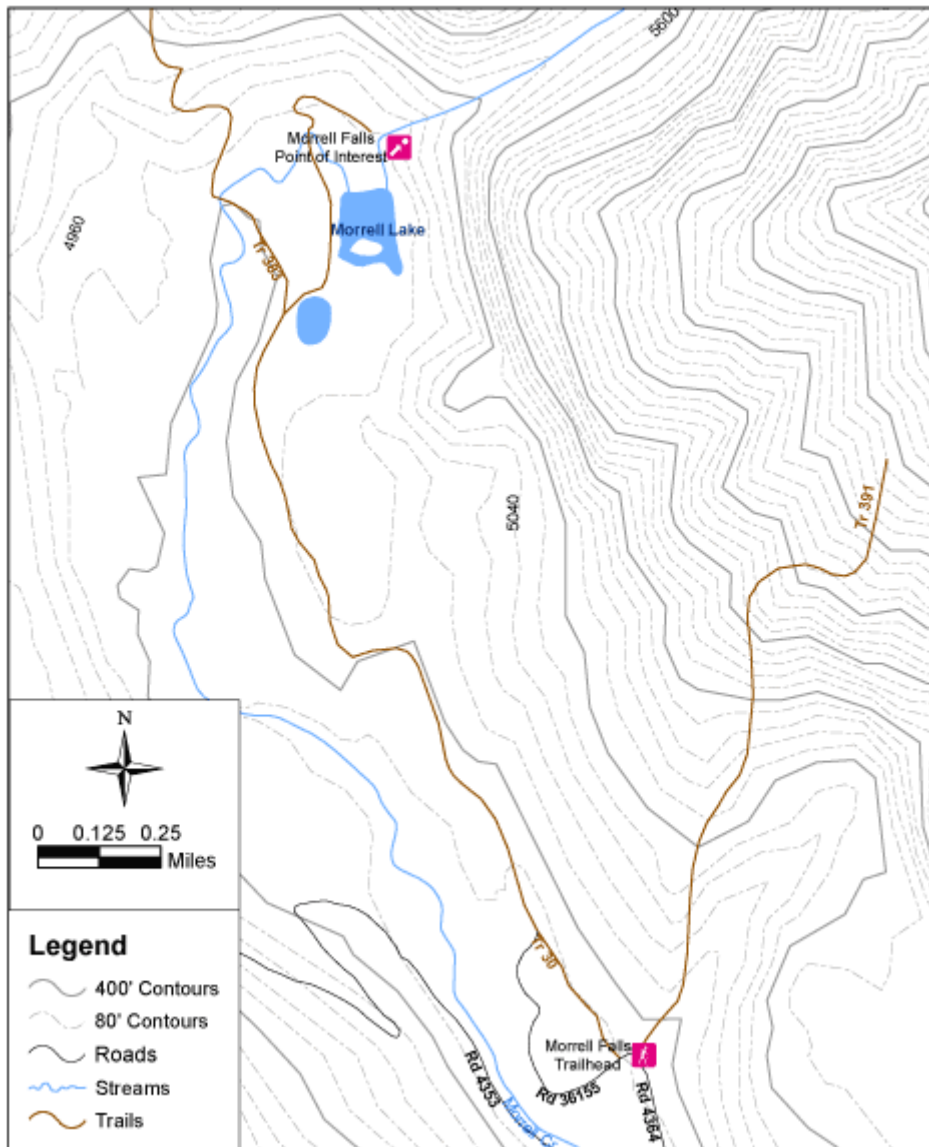
Lolo National Forest Trails Seeley Lake Ranger District

Morrell Falls National Recreation Trail #30 Extended Information

Trail Attributes Table

Item	Remarks
Managed Use(s):	Hiking, equestrian, mountain biking.
Difficulty:	Easy
Trail Length:	2.7 miles (one-way)
Trail Termini:	Beginning - Trailhead at end of Morrell Falls Road #4364. Ending - Base of Morrell Falls.
Trail Elevation:	At beginning/lowest - 4730 ft. At End - 4840 ft. At highest - 4880 ft.
Managed Use Seasons:	Late spring/summer/fall
Maintenance Frequency:	Yearly
Trip Type/Duration:	Day trip to Morrell Falls and return to trailhead on fairly flat trail; undeveloped campsites are available at Morrell Lake for those desiring overnight trips.
Trail Usage:	High
Trailhead Facilities:	Parking for several vehicles and outdoor toilet are available; several dispersed (undeveloped) campsites. No developed drinking water.
Trail Use Restrictions:	Non-motorized use only except open to snowmobiling after December 1.
Reference Maps:	Lolo NF Visitor Map, Seeley Lake (East) Half. USGS Topographic Quadrangle: Morrell Lake.
Map Location:	Section 36, T18N, R15W.
Associated Trails:	Grizzly Basin Trail #409 - climbs from near Morrell Falls into the Swan Mountains along the east fork of Morrell Creek; 6 miles long; infrequently maintained. Morrell Creek Trail #383 - a primitive trail that takes off from Trail 30 near Morrell Lake and goes up the west fork of Morrell Creek to Trail 430; 3.5 miles long; infrequently maintained. Crescent Mountain Trail #391 - a primitive trail that takes off from the beginning of Trail 30 and climbs onto the flank of Crescent Mountain; 1.5 miles long; not maintained.

Trail Map



Attractions and Considerations

This 2.7 mile (one-way) National Recreation Trail leads to Morrell Lake and beautiful Morrell Falls at the base of the Swan Mountain Range. Most of the trail is in the timber, but the views of the Swan Mountains are tremendous from Morrell Lake.

Morrell Lake is located approximately 2.3 miles from the trailhead and Morrell Falls, located past the northeast corner of the lake, marks the end of the trail. Morrell Creek cascades down a spectacular 90-foot double falls. A short, steep climb provides a rewarding view of the falls from above but be very careful if you pursue this.

There is adequate parking and several dispersed campsites located at the trailhead and near Morrell Lake. An outdoor toilet is also provided at the trailhead. No developed drinking water source is available.

This trail is in grizzly bear country. Visitors are reminded to take appropriate precautions. See our main trail page for more information on recreating in bear country and food storage restrictions.

Trail Description

This is one of the most popular trails on the Seeley Lake Ranger District. The trail is predominantly used by day hikers although bicyclists and stock users frequent the trail as well. The trail is closed to motorized vehicles, except for snowmobiles after December 1.

The first portion of the trail is located through a lodgepole pine flat. The remainder passes through a mixed forest of pine, fir, larch, and spruce. The drainages in this area support a variety of wildlife including beaver, bobcat, black and grizzly bear, elk, deer, mountain lion, and moose.

An old hunter/trapper trail heads north into the Grizzly Basin area from near the base of the falls. Grizzly Basin Trail #409 is unmaintained and can be difficult to follow. The trail offers solitude and more natural and physical challenges.

Trail Access

Travel .5 miles north of the town of Seeley Lake on Highway 83, turn east (right) on Morrell Creek Road (small green street sign) which becomes Forest Road #477 Cottonwood Lakes Road, and go 1.1 miles. Turn north (left) on West Morrell Road #4353, travel about 6 miles. Turn east (right) on Pyramid Pass Road #4381, go .25 miles. Then turn north (left) on Morrell Falls Road #4364, continue travel for 1 mile to the Morrell Falls Trailhead and parking area.

Access Map



Reminders

Visitors are reminded to practice Leave No Trace, Leave No Weeds, and proper trail etiquette techniques. For details on this and other trail etiquette topics, visit our main trails page at:

<http://www.fs.fed.us/r1/lolo/recreation-trails>

More Information

For current trail conditions and other trail information, contact the Seeley Lake Ranger Station at (406) 677-2233.

If you want to visit the ranger station, it is located off Highway 83, 3 miles north of the town of Seeley Lake, at mile marker 18. It is on the west side of the highway.